

HOTWIRE

FOR INTERNAL USE ONLY

SPECIAL



ATLAS ORGANISATION, PEOPLE & PARTNERS

Dear Colleagues,

The Organisation, People and Partners (OPP) function, led to date by Anthony de Sigley, was created last year in recognition that people are at the heart of our organisation.

Since its inception, Anthony's team have worked to develop a performance driven culture in ATLAS – driving organisational clarity and behavioural change. The function is now properly established and you will have all witnessed the beginnings of real change in ATLAS and the way we do business. Whilst we still have a long journey ahead of us, we have made substantial progress, taking a number of important steps forward in a relatively short span of time: today we have a greater organisational clarity, with better understanding across the team about the nature of our business and who is on point for what, we have improved levels of communication, a greater emphasis on proactive leadership driving change forward across our business, and the beginnings of real change in attitude and behaviours.

Having been part of the ATLAS team for two years, Anthony has decided to move on to pursue a new challenge within EDS.

I would like to take this opportunity to thank Anthony for standing up and mobilising the OPP function, and for his hard work, dedication and contribution to our business over the last two years — taking us towards our ultimate goal creating a high performing ATLAS team working together to deliver DII.

As Anthony moves on, I am pleased to welcome Manley Hopkinson as the new Director of Organisation, People and Partners (wef 13/05/08)

Manley has had a full, varied and challenging career, having been an inspector in the Royal Hong Kong Police, managed his own boat building and servicing company, served twice as an officer in the Royal Navy (rejoining for the 1st Gulf War) and been a Marine Surveyor. Manley is also a professional yachtsman and as many of you will know from the recent Energiser Events, he was the skipper of 'Olympic Group', one of the twelve yachts competing in the incredible BT Global Challenge 2000-01. He also participated in and won the North Pole Race.

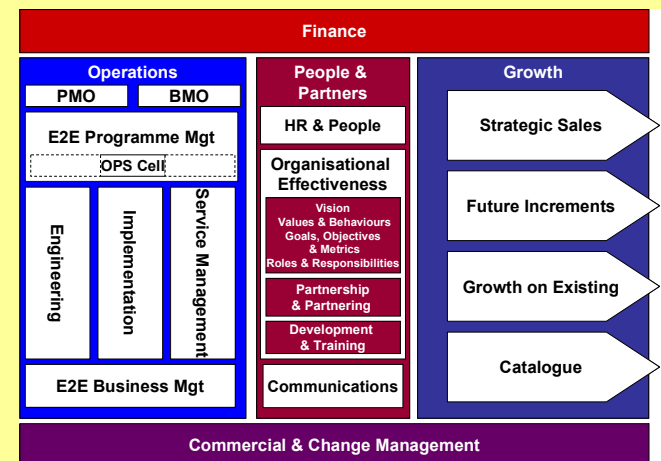
More recently, Manley has focused on leadership and change, working at board level with a number of large organisations, including Littlewoods, UBS, RBS and Schlumberger, supporting their business transformation programmes and helping to develop

leadership capability and facilitate business change. His experience is unique, as is his understanding of leadership, change and what it takes to take on and overcome challenges.

I would like to congratulate Manley on his appointment and wish him every success in this exciting and challenging role. I know that he can count on your support.

Regards

Huw T Owen
ATLAS Chief Executive Officer



Organisation, People and Partners



The Organisation, People and Partners function, led by Manley Hopkinson, includes HR, Organisational Effectiveness (Transformation, Partnering and Partnership, Development and Training), and Marketing and Communications.

Manley's responsibilities include:

- Organisational Effectiveness – Ensuring organisational clarity, behavioural change and developing a performance driven culture;
- HR – Aligning the HR policies and practices of the consortium partners to support a consistent approach to staff engagement, performance management, reward and recognition, and talent management. Promoting mature collaborative working within the consortium and with the MoD;
- Communications – Internal, programme and External marketing and communications, including PR;

Manley's focus will be on forging a single ATLAS team, aligned to a single vision, ensuring that we have the right people, empowered in the right positions with clearly defined roles and responsibilities.

HR & People

Richard Gardner takes over from Roger Metcalfe as the EDS HR Business Partner for ATLAS. Richard and his consortium counterparts will work together with the ATLAS Leadership Team to ensure that compensation, performance management, engagement, and talent are properly addressed.

The HR support needs of our business will be coordinated by Linda Crawford.

The partner HR leads are:

- FJ — Michele Babey
- EADS — Alison Noon-Jones
- GD — Alison Stallard
- Logica — Mark Field

Organisational Effectiveness

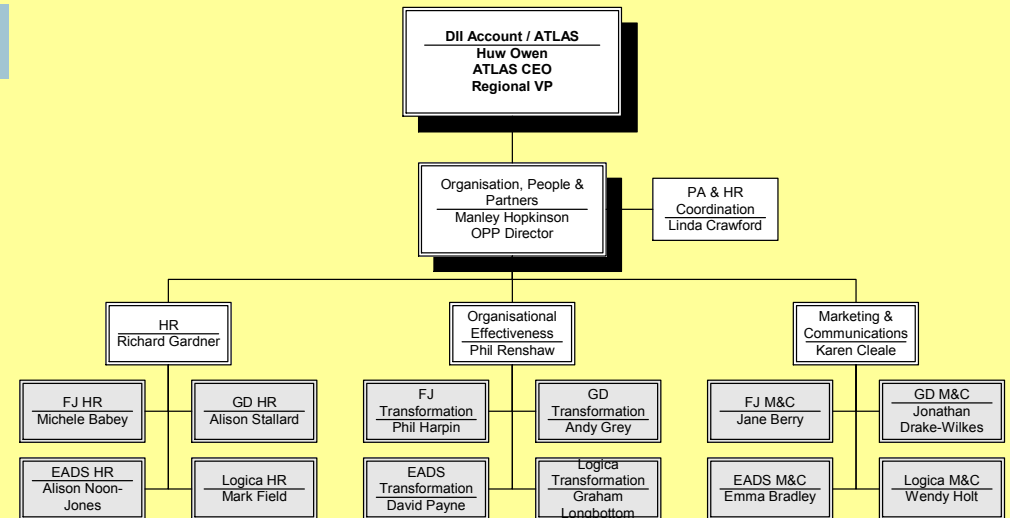
Phil Renshaw leads Organisational Effectiveness and supports our development in becoming a single high performing team with the effective and efficient organisation needed to achieve our goals. There are three core areas that work closely together to be successful:

Development and Training

This function; led by Emma Riddell, is responsible for proactive development of our people, individually and as a team, including driving the ATLAS Leadership Development Programme, and is fundamental to enabling shared behaviours across ATLAS.

Partnering

The Partnering function, currently led by James Still, is responsible for developing and maintaining strong collaborative working practices across ATLAS and with the MoD. James will be joined by Ian



Church on June 2nd who will take over with effect from July 1st.

Transformation

The Transformation function, also led by Phil, is responsible for facilitating our journey to becoming a single team, ensuring we have a clear direction to achieve our vision and a strong sense of belonging to ATLAS through a shared culture.

The partner transformation leads are:

- EADS — David Payne
- FJ — Phil Harpin
- GD — Andy Grey
- Logica — Graham Longbottom

Marketing & Communications

Karen Cleale heads our Marketing and Communications function and is responsible for:

- Internal Communication within ATLAS to ensure alignment and facilitate the understanding of our business, vision, mission, drivers, and programme;
- Programme Communications, supporting Operations through the provision of communication materials and channels to meet the needs of the Programme and the MoD;
- External Communication of the DII programme, its status and successes, into the consortium companies, the MoD and the marketplace.

The partner Marketing & Communications leads are:

- FJ — Jane Berry
- EADS — Emma Bradley
- GD — Jonathan Drake-Wilkes
- Logica — Wendy Holt

